

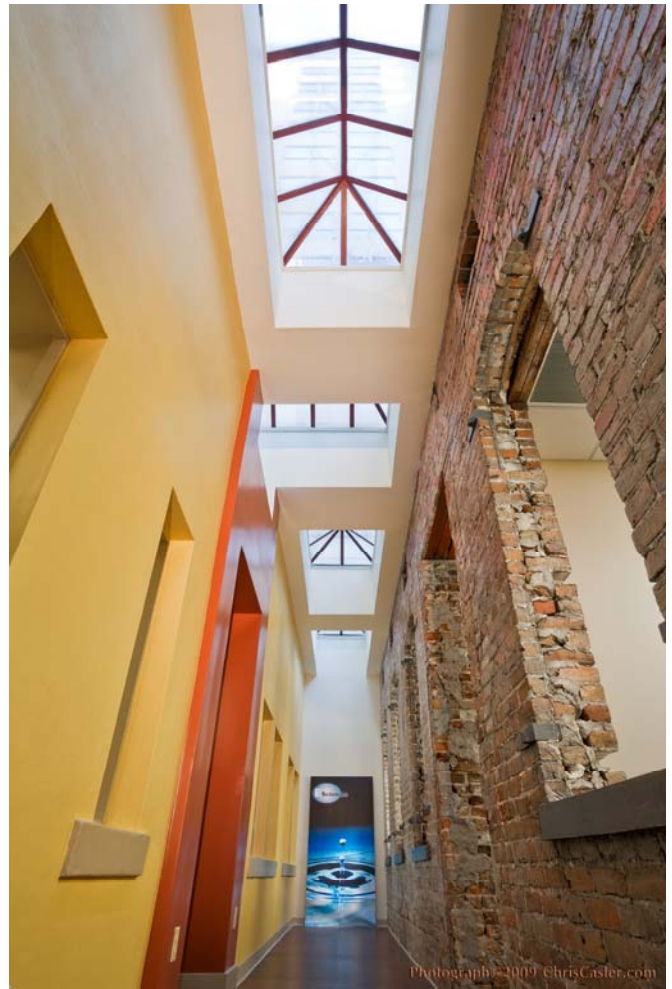
Old Meets New: Recycling Office Space

E Sciences was recently honored by the Downtown Orlando Partnership at the Golden Brick Awards, for the interior buildout design of the company's headquarters located at 34 East Pine Street in Orlando.

An accelerated design/build effort by E Sciences allowed The City of Orlando to move forward on breaking ground for the new Events Center after the City's condemnation of E Sciences' South Hughey location. The firm purchased Orlando's oldest standing structure, the Knox-Bacon Building, located in the historic district and Orlando Brownfield Area (DEEDS BF 480401000) for renovation and renewal.

Exposing the ceiling structure and 1880's brick masonry walls created an expansive modern feel within the space and kept the historic feel. Vibrant colors and an innovative lighting plan brighten the interior, creating a colorful evening streetscape and an energetic daytime workspace. Recycled multi-paned doors echo the original casement windows on the façade and create an open flow of private and collaborative work areas. Health and relaxation activities were incorporated into the renovation with an exercise/recreation room and shower. The buildout project maintained 25 permanent professional jobs in the downtown historic area, in addition to two start-up business tenants.

E Sciences professional staff of engineers, geologists, scientists, and ecologists offer similar integrated urban revitalization services for Brownfields and other blighted properties where real or perceived environmental issues have resulted in abandoned and underused properties. With a focus on reuse, renewal, and sustainability, E Sciences partners with clients and the community to provide new opportunities in problem areas. Urban revitalization requires careful project management to ensure successful results—we explore funding and grant opportunities, community involvement, and make careful economic and environmental decisions. Innovation and problem solving are key to executing a profitable urban revitalization project.



Above: Atrium view of the original building's rear masonry window and door openings, juxtaposed with a colorful south wall joining the older and newer sections of the structure.

E Sciences provides a team approach to providing these and other redevelopment services:

- Brownfields Program Management
- Grant Identification/Application Support
- Risk Management
- Feasibility Studies & Site Planning
- Permitting Assistance
- Environmental Assessment and Remediation
- GIS Mapping/Database
- Stakeholder Support
- Community Support and Marketing
- Water-Friendly Planning
- Urban Forestry and Xeriscaping
- Ecological Surveys

For additional information about E Sciences' innovative Urban Revitalization program, contact Jeffrey J. Peters, P.G. (Orlando) at jpeters@esciencesinc.com or Nadia G. Locke, P.E. (Fort Lauderdale) at nlocke@esciencesinc.com.

E SCIENCES WINS GREATER FORT LAUDERDALE CHAMBER OF COMMERCE SMALL BUSINESS OF THE YEAR AWARD

E Sciences was recently honored by the Greater Fort Lauderdale Chamber of Commerce during its Fifth Annual Small Business of the Year Award, presented by Staples, in the Established Business Category. The Broward County office, opened in 2002 by Patricia L. Gertenbach, P.G. and Nadia G. Locke, P.E., has more than 10 employees and is a proud supporter of the Fort Lauderdale and South Florida communities.

"We appreciate the Chamber recognizing our community service and leadership," said Ms. Gertenbach. "We have been fortunate to be so well received in the South Florida community, and to have been able to experience continued growth in a down economy."

When the E Sciences firm began nearly 10 years ago, it incorporated into its mission statement and marketing plan annual humanitarian and environmental services projects that essentially give back to the communities in which they do business. E Sciences staff members serve in a variety of leadership capacities, from advisory boards to city and county boards around South Florida. E Sciences shutters each office twice annually during the work week to provide volunteer services as a company team. We have worked at local food banks, homeless shelters and parks. One of our senior staff members has participated in Leadership Ft. Lauderdale (LFL), and has also been co-chair and sponsor LFL's Environmental Day for the past three years.

Members of our staff volunteer their own time with a number of community programs, including Chair of Broward County's Bicycle/Pedestrian Advisory Committee; Appointee to the City of Fort Lauderdale's Community Advisory Board; Broward Humane Society Walk for the Animals; SPCA Wildlife Care Center Walk for the Wildlife; Broward County Climate Change Taskforce Subcommittee on Greenhouse Gas Emissions; Southeast Florida Coral Reef Initiative Awareness and Appreciation Focus Team; Committee Chair/Bylaws Committee of the Landscape Inspectors Association; and Volunteer for the City of Plantation's Shade Brigade.

Patricia L. Gertenbach, P.G. (l) and Nadia G. Locke, P.E. (r) pose proudly with the Greater Fort Lauderdale Chamber of Commerce Small Business of the Year Award 2009.

Pattie and Nadia founded the Fort Lauderdale office in 2002, and have done an outstanding job of providing quality environmental and ecological engineering services throughout South Florida.

Congratulations and job well done!



E SCIENCES' DOUG POWERS: CERTIFIED GOPHER TORTOISE AGENT

Doug Powers, Project Scientist in the Orlando Office, recently received notification from the Florida Fish and Wildlife Conservation Commission approving his application to act as an Authorized Gopher Tortoise Agent in the State of Florida. This authorization allows Doug to provide gopher tortoise services including survey, relocation, recipient site assessments and habitat management plans under the new Gopher Tortoise regulations. Doug will be working closely with all of E Sciences' ecological staff on future projects to also receive this authorization. At present, there are less than a dozen authorized gopher tortoise agents in Central Florida, a mere handful here in Orange and Seminole County, and none from Indian River through Broward Counties. This certification is an important benchmark for ecologists working with this threatened species. Please contact Doug for additional information on gopher tortoise permitting and habitat conservation options at (407) 481-9006, or via email at dpowers@esciencesinc.com.

TEAM WITH US! *E Sciences joined with Renaissance Planning Group on a winning team to provide Large DRI Review Services to Manatee County, in addition to teaming with Metric Engineering, Inc., Eisman & Russo Consulting Engineers, and EAC Consulting Engineers for ecological support to the City of Hallandale Beach under a Comprehensive Continuing Services Contract. The firm also recently teamed with Subaqueous Services/Orion for Hernando Beach dredging services, and Shoreline Foundation for the City of Miami's Dinner Key Mitigation site.*

To discuss teaming opportunities for your next winning project, contact Pam Stewart, Marketing Professional, at pstewart@esciencesinc.com or by phone at (407) 481-9006.

Where Three Water Management Districts Meet: The Central Florida Coordination Area (CFCA)



E Sciences is participating in a flagship wetland assessment program upon invitation from the South Florida Water Management District. The overall project is a coordinated wetland assessment effort between the South Florida, St. Johns River and Southwest Florida Water Management Districts. The project occurs within the Central Florida Coordination Area (CFCA), the land region where these three districts come together. The purpose of this project is to identify potential trends in the ecological health and stability of wetlands within the CFCA.

The wetland information will be used to guide management practices and decision-making, including allocation of water use permits based on effects to hydrology of the region's wetlands. E Sciences assessed 12 wetland sites within the CFCA area to support the water management districts, including characteristics, topographical relief, wildlife species, hydrologic indicators, and overall system health and stress. The regulatory working group (RWG) and the Environmental Assessment Subgroup (EAS) teams comprised of the three water management districts have identified a need for regional assessment of wetland conditions in the CFCA due to rapid urbanization and growing demands for groundwater use.

LOCATIONS

Orlando (Headquarters)
34 East Pine Street
Orlando, FL 32801
407/481-9006 Tel
407/481-9627 Fax

Fort Lauderdale
5310 NW 33rd Ave, Ste 201
Fort Lauderdale, FL 33309
954/484-8500 Tel
954/484-5146 Fax

Sarasota
1990 Main St, Ste 750
941/309-5309 Tel
941/309-5409 Fax

esciencesinc.com